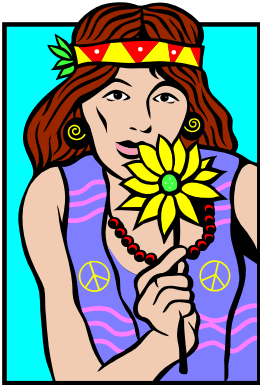


ROCHESTER COUNTRY FAIR  
**PHOTO EXHIBIT & CONTEST**  
**August 20th - 21st, 2011**

**"FLASH BACK TO THE '60's"**



**ENTER PHOTOS OF:**

**60'S PEOPLE**  
**1960'S VEHICLES**  
**SCENES FROM THE 60'S**

**1960'S CLASS PHOTOS**  
**("GUESS WHO" CONTESTS!!)**

Memorabilia from the 60's on display

**ENTER TO WIN PRIZES**

SUBMIT PHOTOS between August 10<sup>th</sup> and 18<sup>th</sup>  
To BEV LOVES BOOKS  
at PLUMB CORNER MALL, ROCHESTER

[www.rochesterma.com](http://www.rochesterma.com)